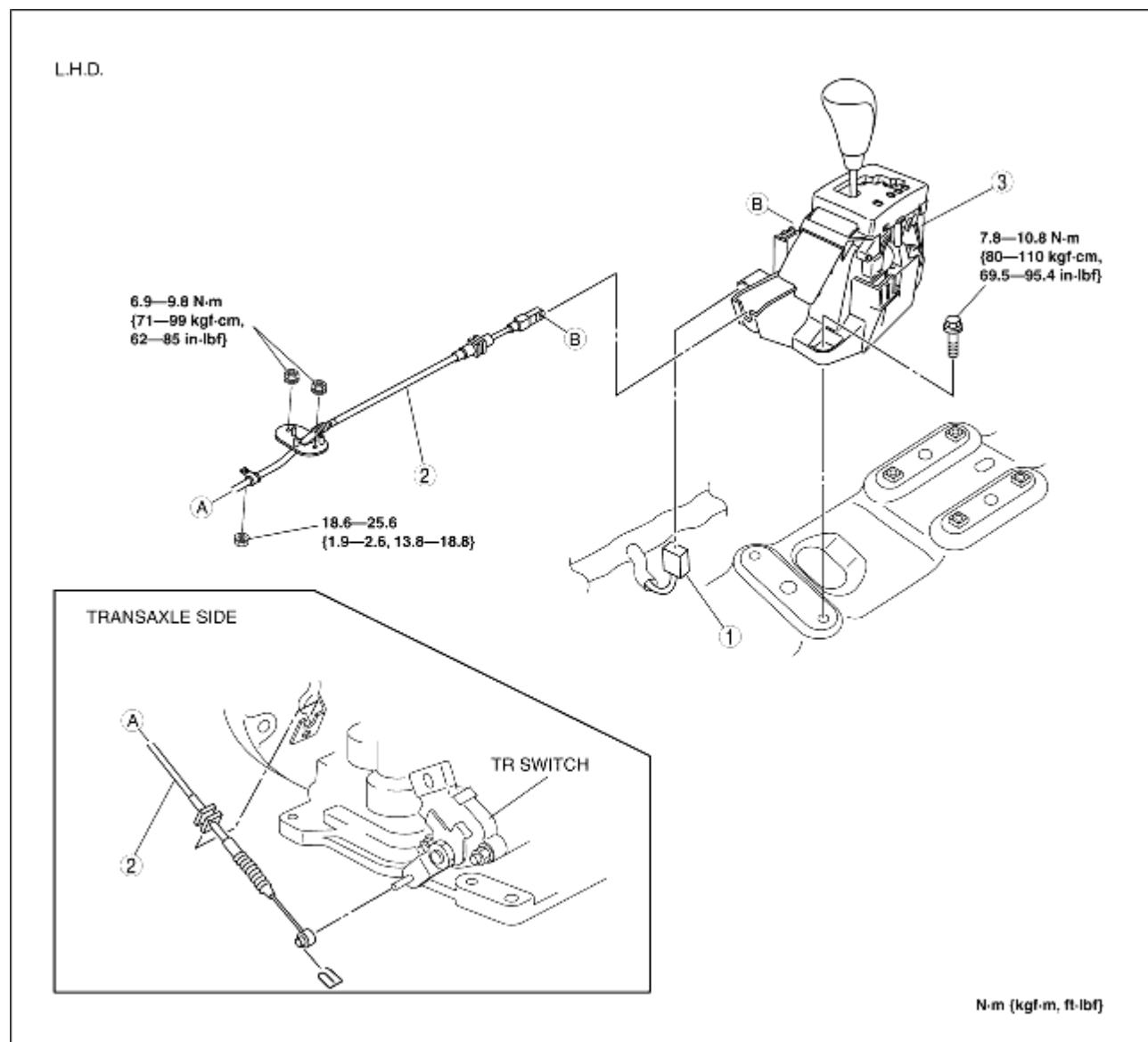


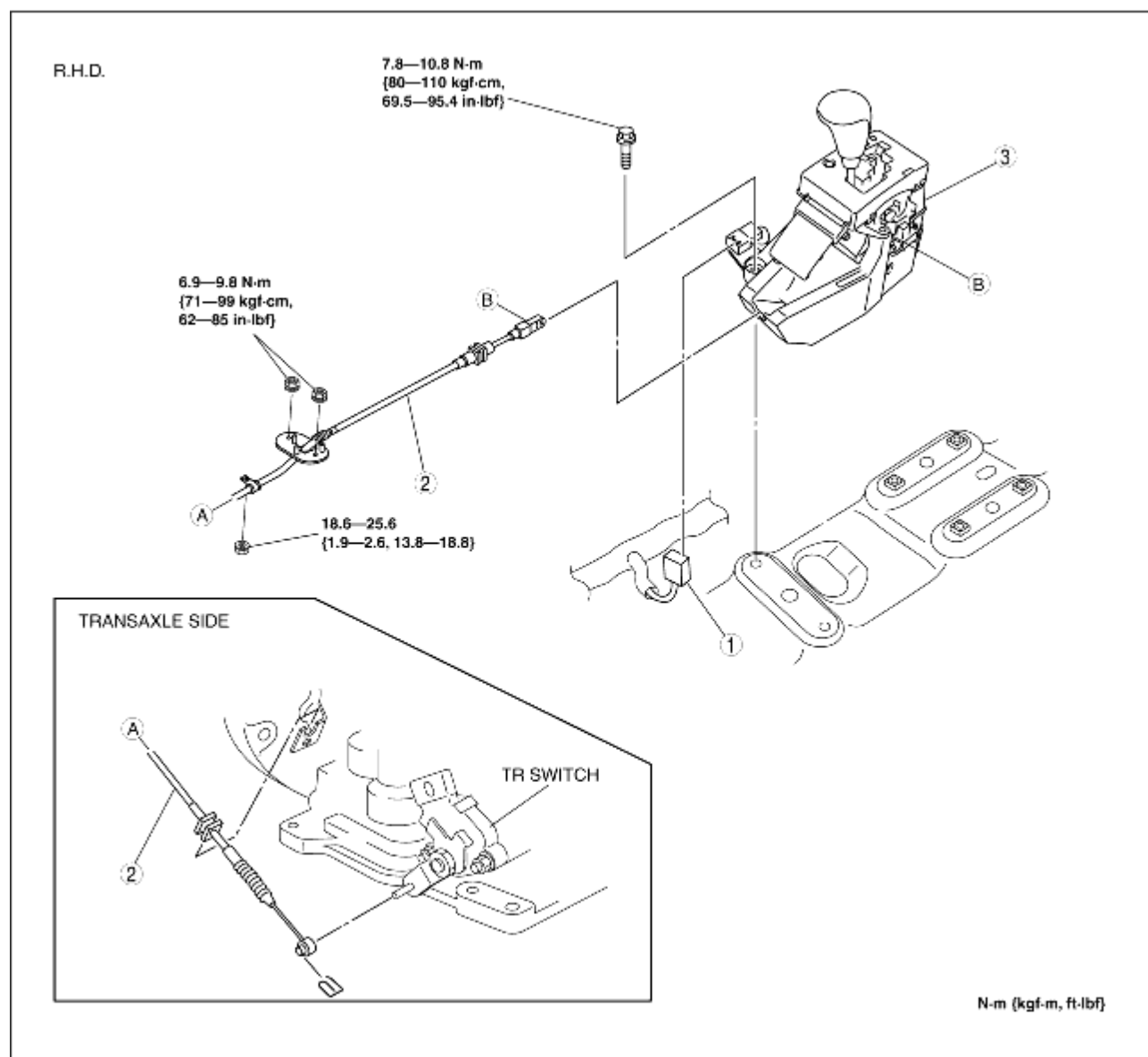
SELECTOR LEVER COMPONENT REMOVAL/INSTALLATION

B3E051846102W04

1. Remove the battery cover. (See [BATTERY REMOVAL/INSTALLATION \[ZJ, Z6\]](#).) (See [BATTERY REMOVAL/INSTALLATION \[LF\]](#).)
2. Disconnect the negative battery cable.
3. Remove the battery, battery box and battery tray. (See [BATTERY REMOVAL/INSTALLATION \[ZJ, Z6\]](#).) (See [BATTERY REMOVAL/INSTALLATION \[LF\]](#).)
4. Remove the air cleaner component. (See [INTAKE-AIR SYSTEM REMOVAL/INSTALLATION \[ZJ, Z6\]](#).) (See [INTAKE-AIR SYSTEM REMOVAL/INSTALLATION \[LF\]](#).)
5. Remove the console. (See [CONSOLE REMOVAL/INSTALLATION](#).)
6. Remove the heat insulator. (front and center)
7. Remove in the order indicated in the table.
8. Install in the reverse order of removal.



B3E0518W026



B3E0518W022

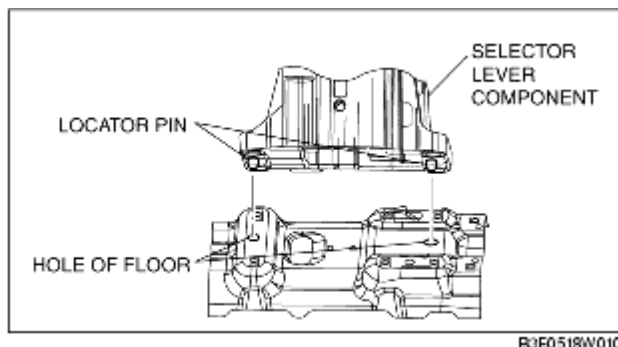
| | |
|---|-----------------------------------------------------------------------------------------------------------------------------------|
| 1 | Selector lever component connector |
| 2 | Selector cable (See Selector Cable Removal Note.) (See Selector Cable Installation Note.) |
| 3 | Selector lever component (See Selector Lever Component Installation Note.) |

Selector Cable Removal Note

1. Remove the clip.
2. Remove the selector cable.

Selector Lever Component Installation Note

1. Insert the locator pin of selector lever component to the hole of floor.



2. Tighten the selector lever component installation bolts.

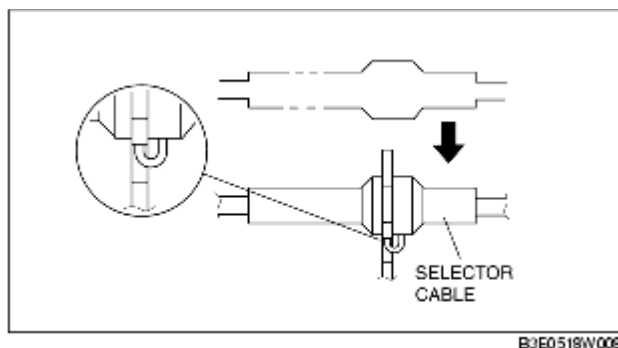
Tightening torque

7.8-10.8 N·m

{80-110 kgf·cm, 69.5-95.4 in·lbf}

Selector Cable Installation Note

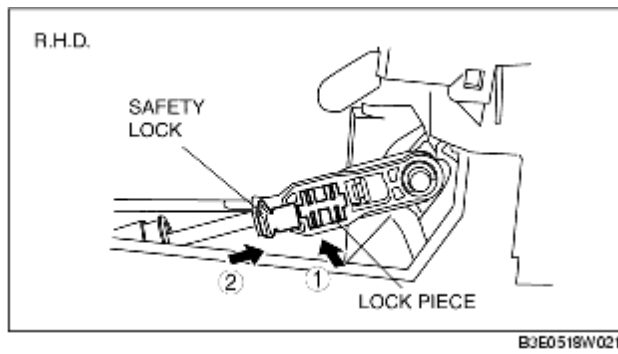
1. Install the selector cable to the selector lever securely.
2. Install the selector cable to the bracket securely.



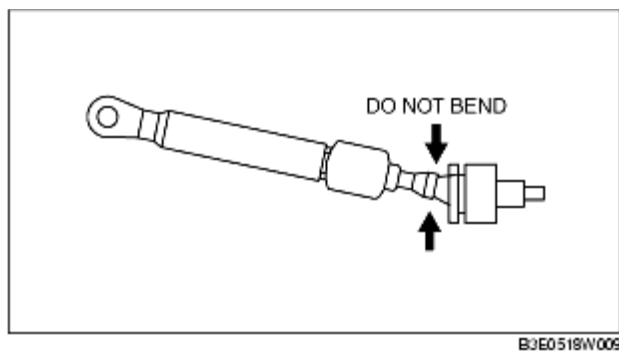
Note

- Steps 3 and 4 are for the selector cable replacement only.

3. Verify that the selector lever is in the P position.
4. Lock the lock piece and safety lock of the selector cable (selector lever side) in the order as shown in the figure.



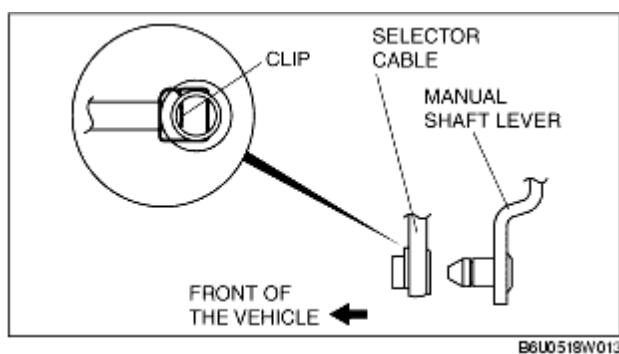
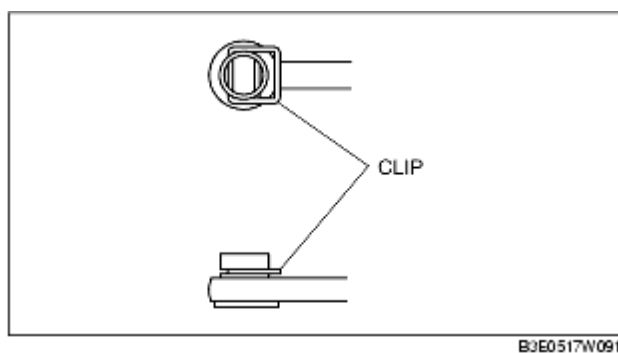
5. Verify that the manual shaft is in the P position.



Caution

- Bending the selector cable in the manner shown in the figure will damage the cable and it may become loose when shifted. When installing the selector cable, hold it straight.

6. Install the clip as shown in the figure.



Note

- Install the selector cable to the manual shaft lever with the clip side of the selector cable end facing the front of the vehicle.

7. Install the selector cable to the manual shaft lever in such a way that the selector cable does not bear a load.

8. Confirm that the end of the manual shaft lever sticks out of the end of the selector cable.

9. Install the selector cable to the selector cable bracket securely.